



# Agape OUTREACH<sup>inc.</sup>

*Serving the homeless and needy*

[www.agapeoutreachinc.com](http://www.agapeoutreachinc.com)

## SPONSORSHIP BOOKLET

# Value to the Community during '25



**66,000+**

Meals provided annually

**\$396K** annually



**10,000+**

Food hampers distributed

**\$700K** annually



**2,700+**

Case management sessions

**~\$325K** annually

**Total annual value= \$3,449,441**



**350+**

Volunteers

**\$1.6M** given back



**127,630 kg**

Food rescued  
**\$446K** saved

**~320 t CO<sub>2</sub>e**  
CO<sub>2</sub> avoided



**400+**

Counselling sessions

**\$88K** impact



# Table of Contents

»»	<b>About Agape Outreach</b>	→	Page 04
»»	<b>Community Impact</b>	→	Page 05
»»	<b>What your business gets back?</b>	→	Page 06
»»	<b>Food Outreach Services</b>	→	Page 07
»»	<b>Food Hamper Services</b>	→	Page 09
»»	<b>Mental Health Support Services</b>	→	Page 10
»»	<b>Housing Pathway &amp; Case Management</b>	→	Page 11
»»	<b>Life Skills &amp; Self-Efficacy Programs</b>	→	Page 12
»»	<b>Research &amp; Evidence</b>	→	Page 13
»»	<b>Sponsorship Options</b>	→	Page 14
»»	<b>Testimonial</b>	→	Page 15
»»	<b>Contact us</b>	→	Page 16



# Agape Outreach

**Agape Outreach Inc. is a community-based, not-for-profit organisation working across Northern NSW and the Gold Coast to support people experiencing hardship, housing insecurity, and unmet mental health needs.**

**We respond where systems fall short-before crisis, during crisis, and long after headlines fade.**

**Our work is practical and relational. We provide food relief, essential material support, case coordination, and access to psychological services delivered with dignity and consistency. Support is not time-limited by convenience; it is shaped by need. We focus on stabilising daily living, reducing isolation, and restoring a sense of safety so people can re-engage with housing, health, education, and community.**

**Agape operates from a trauma-informed, strengths-based framework. We work alongside individuals & families rather than doing things for them. Choice, autonomy, and respect guide every interaction.**



# Community Impact (Our Why)

**Across the Gold Coast and Northern NSW (Byron and Tweed Shires), more people are falling through the cracks. A shortage of affordable housing has left many without stable accommodation, while others cannot meet basic needs such as food. The impacts of the Northern Rivers floods continue, with many still displaced.**

**Rising living costs are increasing poverty and financial stress, alongside higher rates of domestic and family violence. Access to mental health care is also limited by cost, waitlists and system barriers. These pressures compound, placing individuals and families at risk of deeper crisis.**

**Agape responds at this point, providing practical, immediate support, including food security, outreach and pathways to care. This includes ongoing support for flood-affected residents still living in unstable conditions.**

**Through partnership with Agape, sponsors fund early intervention that stabilises lives and reduces escalation into an emergency accommodation, hospitalisation and long-term instability.**

**The impact is local, visible and measurable.**



# What your business receives:

## **Visible, accountable impact (not a black hole)**

Your support is directly linked to measurable outcomes - meals served, food rescued, and people supported. You see where it goes, not just that it was given.

## **Brand visibility in the community**

Featured on Agape's in-store TV, rotating daily to a steady flow of local people engaging with our services.

## **Ongoing social media exposure**

Fortnightly promotion across Agape's social channels, positioning your business as actively supporting the community.

## **Newsletter feature and updates**

Inclusion in Agape's newsletters, reaching a broader audience with updates on impact and recognition of your support.

## **Website recognition**

Your business is listed as a community partner, strengthening credibility and trust.

## **Staff engagement and purpose**

Opportunities for your team to volunteer and engage directly with the impact of your support - building morale, connection, and purpose in the workplace.

## **Hands-on, real experience**

Your team can see and be part of the work - serving meals, packing hampers, and connecting with the community. This creates a tangible link between your business and real outcomes.

## **Content and storytelling**

Access to real stories, photos, and impact content you can share with your own audience - showing your values in action.

# Food Outreach Services



**Agape operates mobile and centre-based food services in:**

- **Southport**
- **Tweed Heads**
- **Northern Rivers (Byron Bay to Tweed)**
- **Runaway Bay**

**These services provide safe, nutritious hot meals to people who are homeless, in crisis, or living in deep financial hardship.**

**Food outreach is often the first point of contact – the moment where trust is built, and people begin to engage with support.**

**Donate hot meals for your community for the whole year.**

## **Area Annual Sponsorship**

○ <b>Southport Food Outreach</b>	<b>\$45,000</b>
○ <b>Tweed Heads Food Hub</b>	<b>\$33,000</b>
○ <b>Northern Rivers Food Outreach:</b>	<b>\$22,000</b>
○ <b>Runaway Bay Food Outreach:</b>	<b>\$11,000</b>

# Food Hamper Services



**Agape provides grocery hampers to families, seniors, and people in crisis. This includes seniors going through food insecurity and families escaping domestic violence. They are for households who may have accommodation but can not afford to buy food after paying rent. We also see cases of people with cancer being faced with having to choose between purchasing pain medication or eating.**

**The Food Hampers ensure that people can take home real food, not just a meal for the day. This includes school lunch box items, pantry staples, and food for cooking meals.**

**Your support covers:**

- **Food sorting, rotation and packing**
- **Storage and refrigeration**
- **Transport and distribution**
- **Top-ups of food for when donated food runs low, plus regular staples**

**Food Hamper Sponsorship- \$130,000 per year.  
(over 2000 food hampers)**

# Mental Health Support



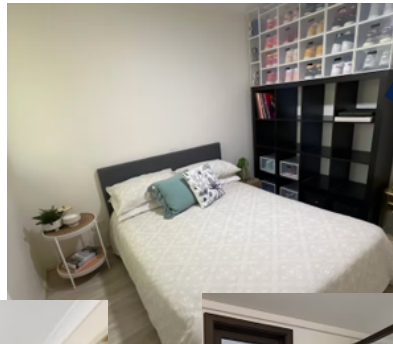
## Psychology & Counselling Clinic

**Agape runs a community psychology service for people who cannot access Medicare-funded or private mental-health care. Our clinic provides trauma-informed counselling, anxiety support and emotional-regulation therapy.**

**With three practitioners, the clinic has the capacity to deliver over 1400 counselling/psychology sessions per year.**

**Program Sponsorship  
Agape Community Psychology Clinic  
\$210,000 per year**

# Case Management- Housing Pathways



**Agape's case-management teams in Tweed Heads and Southport support people to:**

- **Apply for housing**
- **Access Centrelink, MyGov and aged-care services**
- **Obtain furniture, whitegoods and essential items**
- **Stabilise their lives after homelessness**

**Program Annual Sponsorship**

**Tweed Heads Housing Pathway \$70,000**

**Southport Housing Pathway \$40,000**

# Life Skills & Self-Efficacy Programs



**The Agape Life Skills & Self-Efficacy Program is not employment training. It is a mastery-based recovery program where individuals learn to complete real, practical tasks from start to finish in a safe and supportive environment.**

**Participants engage in structured cooking and barista sessions, building confidence, routine and a sense of capability. These are often the first steps toward stability for individuals experiencing homelessness, trauma or prolonged disadvantage.**

**The program delivers 672 participant-sessions each year, supporting approximately 100 individuals annually. Each session is fully resourced, including trained facilitators, ingredients, equipment and supervision.**

**An annual investment of \$80,000 sustains the full program, directly funding consistent, hands-on support that helps people rebuild confidence and re-engage with everyday life.**

**This is early intervention in practice — restoring self-belief, reducing isolation and supporting people to move forward before crisis deepens.**

# Research & Evidence



**Agape's work is guided by real-time data and frontline experience across the Northern Rivers and Gold Coast. This ensures services remain responsive to changing community needs.**

**We track trends in food insecurity, housing instability, mental health access and service demand, including the ongoing impact of the Northern Rivers floods, rising cost of living pressures, and the link between financial stress and domestic and family violence.**

**These pressures rarely occur in isolation. Agape uses this insight to respond with early direct support where it is needed most and to reduce escalation into crisis. Data collected can also inform policy changes to homelessness support.**

**Research & Data Capacity Sponsorship - \$50,000 per year**



# Emergency Disaster Response

**The Northern Rivers floods showed how unprepared we were for a disaster of that scale. As extreme weather increases, it is critical that organisations like Agape Outreach are equipped and ready to respond, ensuring that food, support, and connection continue when communities need it most.**

**\$8,000 – Commercial generator (8–10 kVA) to keep freezers and food operational**

**\$3,000 – Portable community generators for vulnerable households**

**\$2,000 – UHF radio sets for on-ground coordination**

**\$3,000 – Satellite communications (2 × satellite phones)**

**\$8,000 – Non-perishables and consumables**

**\$3,000 – Transport and mobile distribution setup**

**\$3,500 – Additional caseworker support**

**\$2,000 – Laundry services and cleaning supplies**

**Emergency Disaster Support - \$31,500**

# Sponsorship Options

## NSW – Northern Rivers (Based @ Tweed Heads Hub)

- **Tweed Heads Food Hub** **\$ 33,000**
- **Tweed Heads Housing Pathway** **\$ 70,000**
- **Community Psychology Service** **\$ 210,000**
- **Food Hamper Program** **\$ 130,000**
- **Life Skills & Self-Efficacy Program** **\$ 80,000**
- **Research & Data Capacity** **\$ 50,000**

## NSW – Northern Rivers (Outreach)

- **Northern Rivers Food Outreach** **\$ 22,000**

## QLD – Gold Coast

- **Southport Food Outreach** **\$ 45,000**
- **Southport Housing Pathway** **\$ 40,000**
- **Runaway Bay Food Outreach** **\$ 11,000**

**Emergency Disaster Support** **\$ 31,500**

**Cost to run everything for a year** **\$ 722,500**

# Testimonial

**“I didn’t know where else to go. I had to escape my husband; from domestic violence. I took my child and ran, but 5 services turned us away. By the time I arrived at Agape, I was exhausted and overwhelmed.**

**When they said yes to food, yes to clothes, and yes to someone sitting with me and helping me work through the next steps – it felt like everything shifted. I felt like someone actually saw us and cared. It might seem small, but hearing yes when you’ve only heard no can mean everything.”**

**- Anonymous**

## Contact Us



	HQ address	56 Recreation Street, Tweed Heads NSW 2486
	Email	admin@agapeoutreachinc.com
	Phone	+61 7 5293 7154
	Website	<a href="https://agapeoutreachinc.com">https://agapeoutreachinc.com</a>
	Twitter	<a href="https://x.com/outreach_agape">https://x.com/outreach_agape</a>
	Instagram	<a href="https://www.instagram.com/agapeoutreachinc/">https://www.instagram.com/agapeoutreachinc/</a>
	Facebook	<a href="https://www.facebook.com/AgapeOutreachInc">https://www.facebook.com/AgapeOutreachInc</a>
	Linkedin	<a href="https://www.linkedin.com/company/agape-outreach">https://www.linkedin.com/company/agape-outreach</a>

**We'd welcome the opportunity to work with you.**